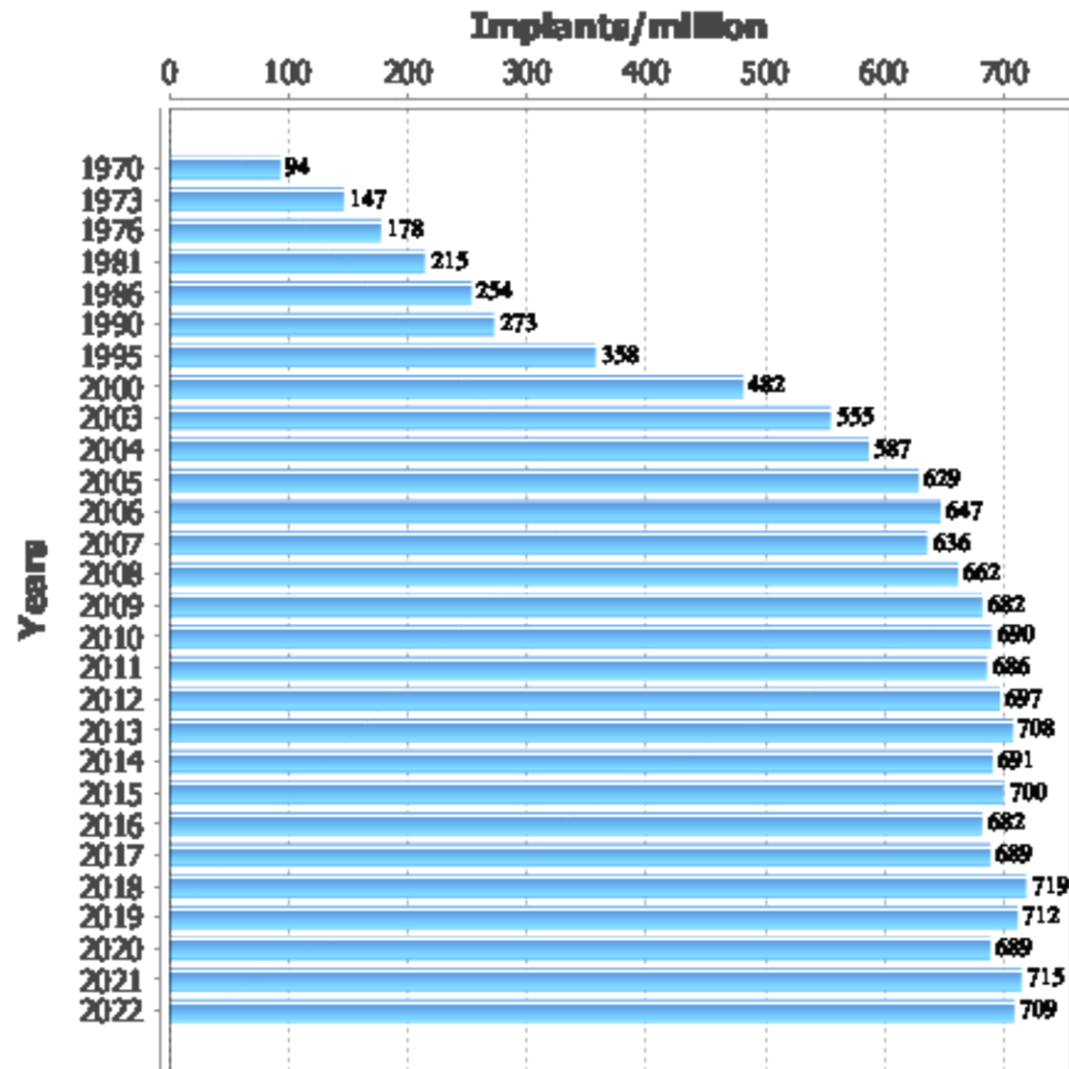


DEVICE

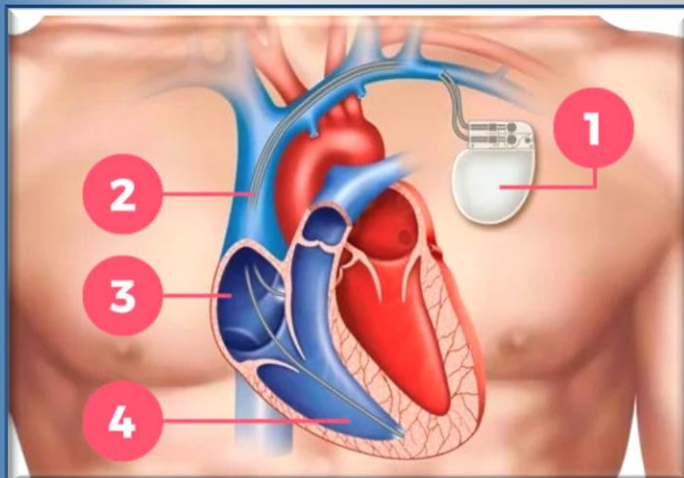
Teknik och hjärta

Tina Tanha
Överläkare Kardiologi, PhD
Device-operatör
Enhetsansvarig läkare Hjärtavdelningen Malmö

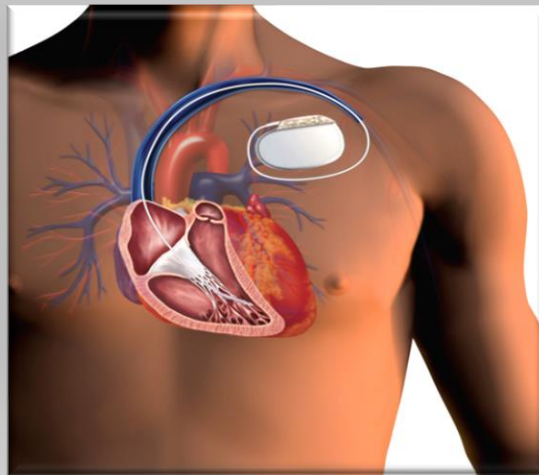
STATISTICS - PACEMAKER - HISTORICAL IMPLANTATION RATES



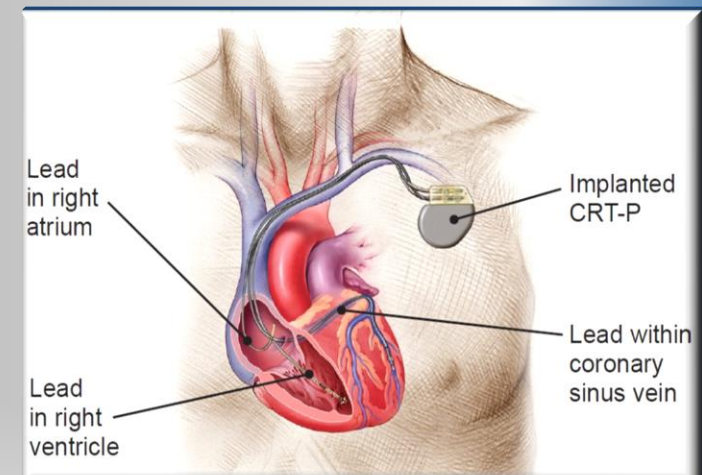
Pacemaker



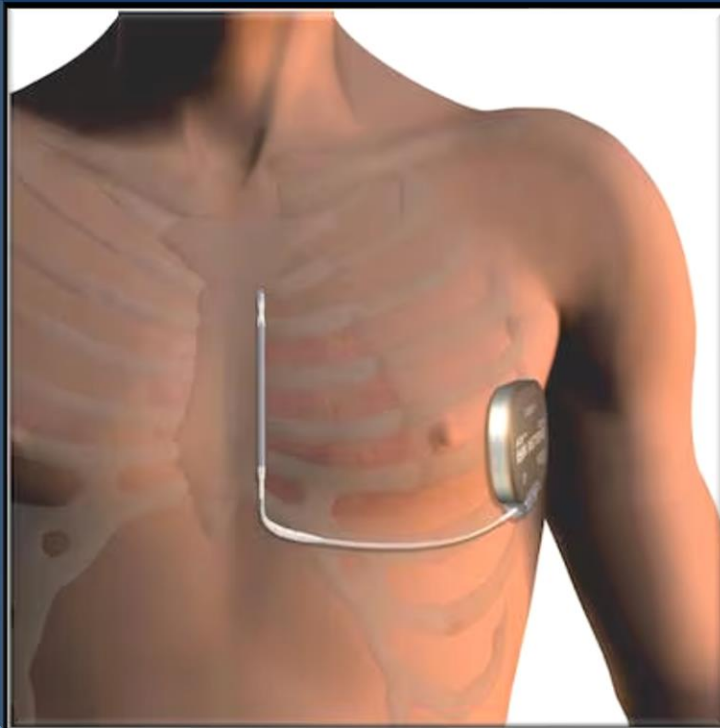
ICD



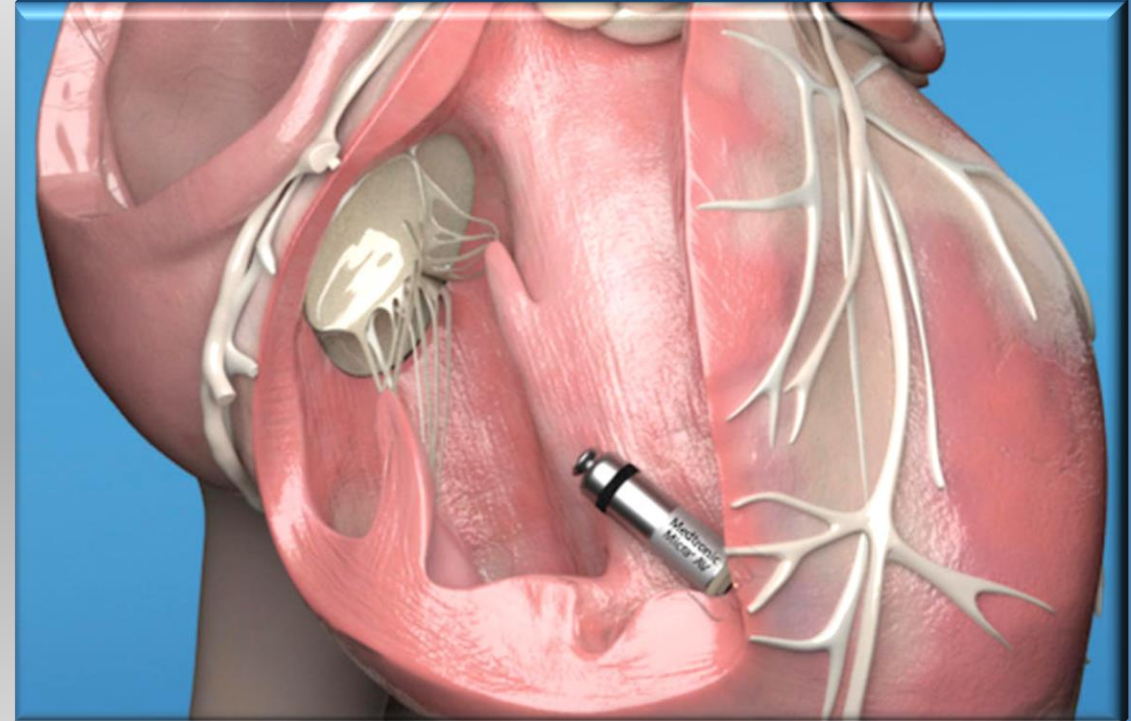
CRT-P



S-ICD



Leadless pacemaker



Definitioner

- ❑ ICD = implantable cardioverter defibrillator
- ❑ CRT = cardiac resynchronization therapy
- ❑ CRT-P = pacemaker-elektrod
- ❑ CRT-D = ICD-elektrod
- ❑ S-ICD = subcutaneous ICD
- ❑ Leadless pacemaker = sladdlös pacemaker

Quiz

I49.0?

Ventrikelflimmer och ventrikelfladder

I49.5?

Sjuk sinusknuta

FPE20?

Inläggande av tranvenös pacemaker med förmaks- och ventrikelelektrod

I46.9?

Hjärtstillestånd

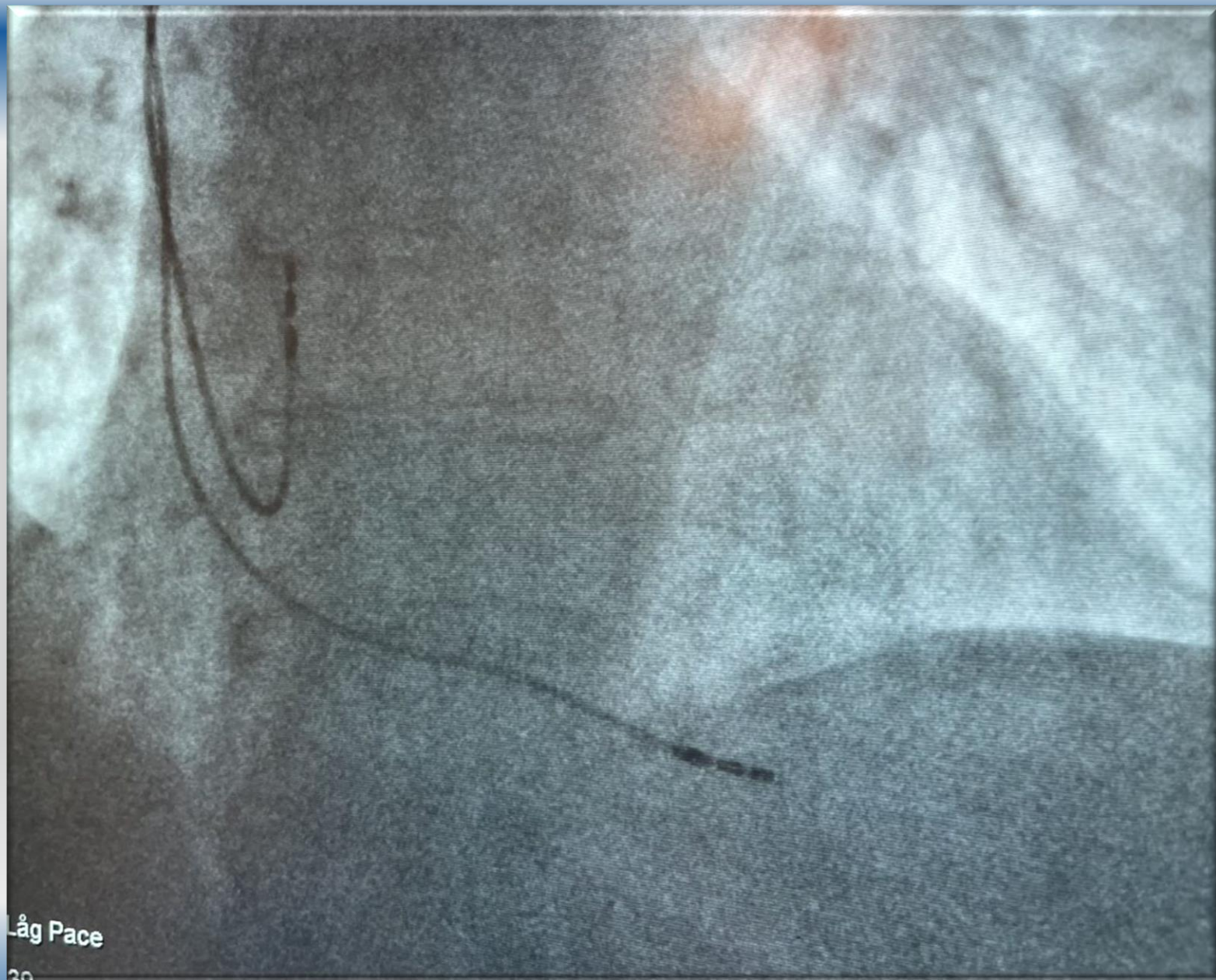
Diagnoser

- Sjuk sinusknuta ----- Pacemaker
- AV-block ----- Pacemaker
- Brady-takysyndrom ----- Pacemaker
- Förmaksflimmer ----- Pacemaker

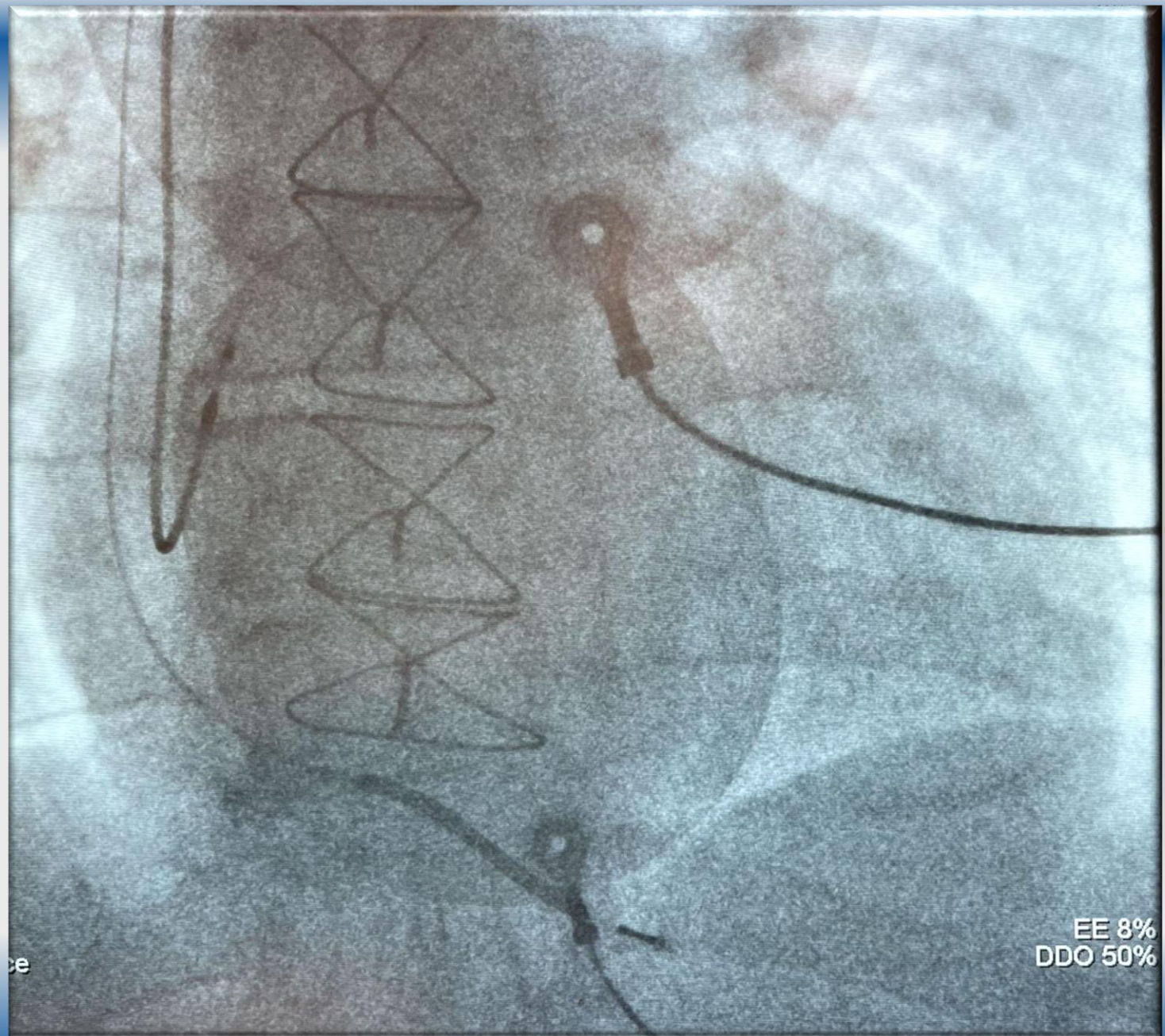
Diagnoser

- Hjärtsvikt ----- CRT
- Hjärtstillestånd ----- ICD
- Ventrikelflimmer ----- ICD
- Ventrikeltakykardi ----- ICD

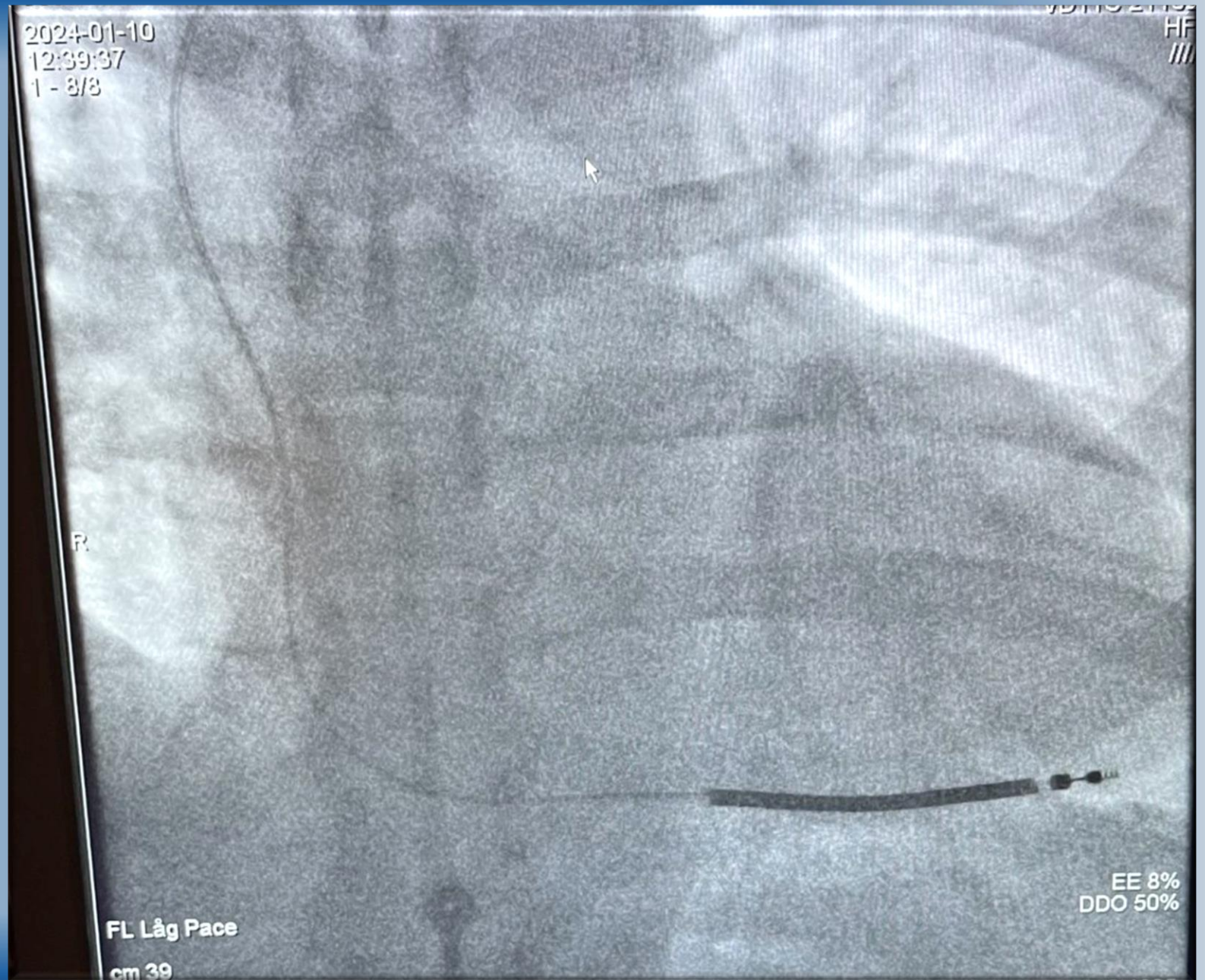
Pacemaker



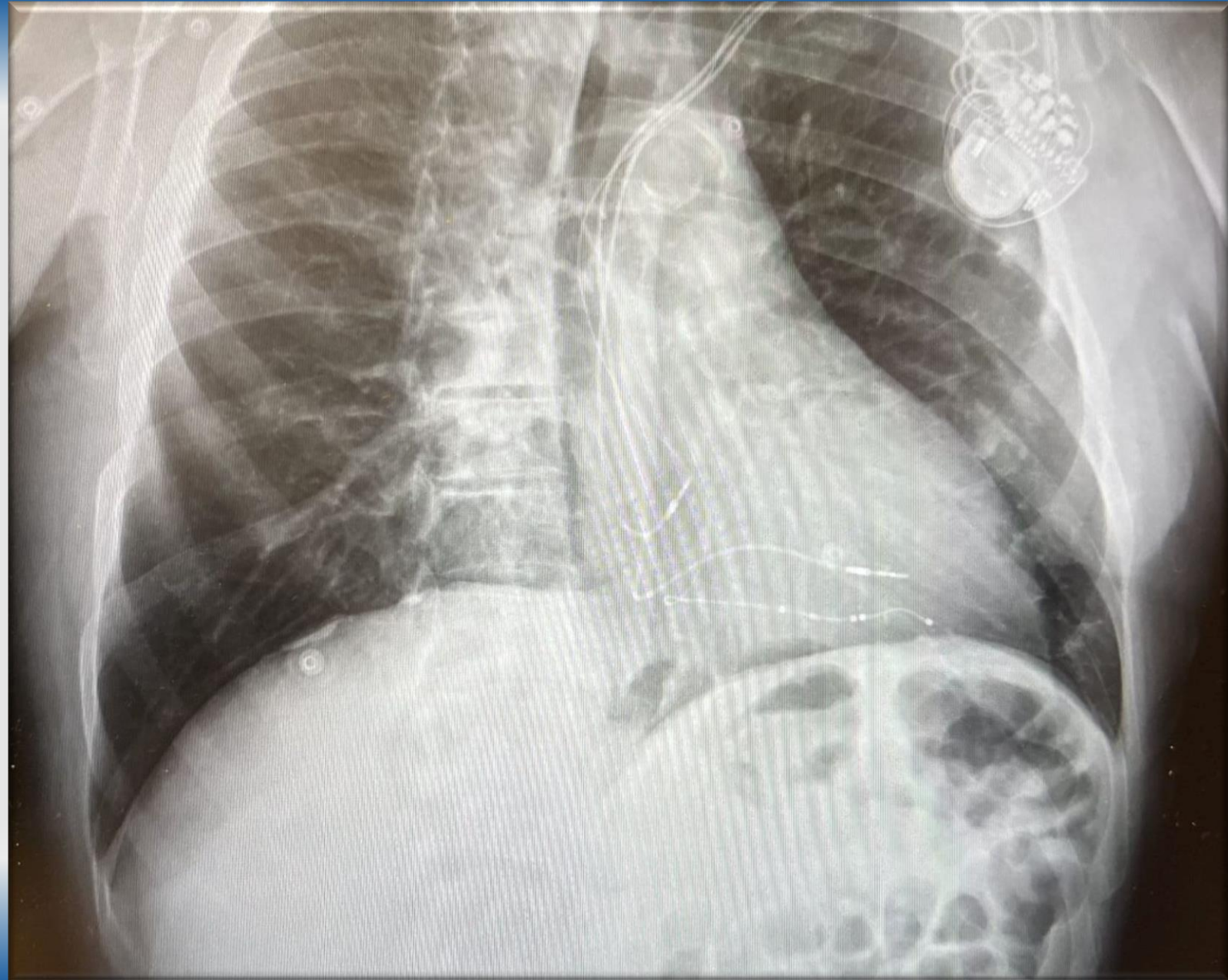
ICD



ICD



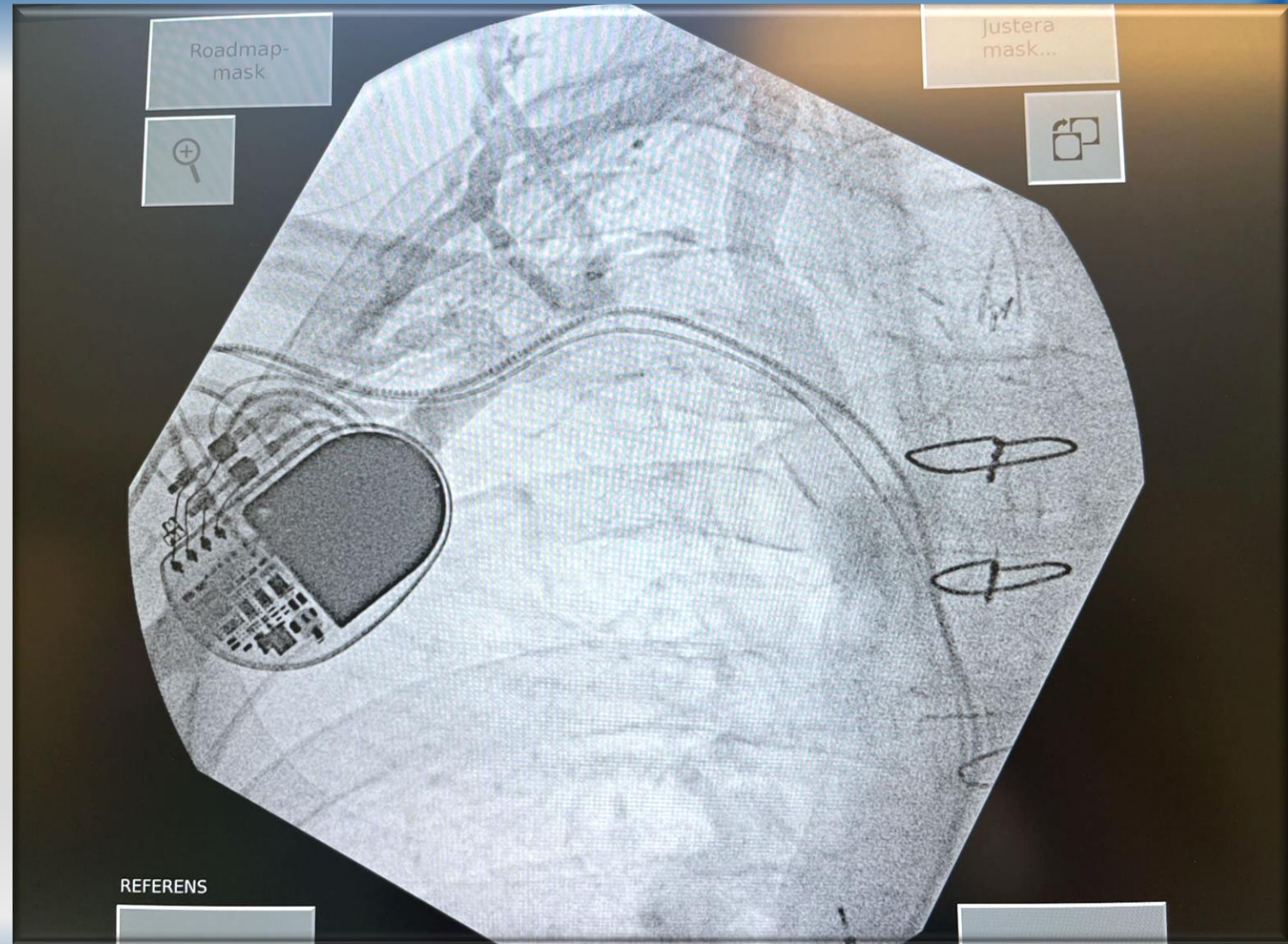
CRT










Sladdlös pacemaker

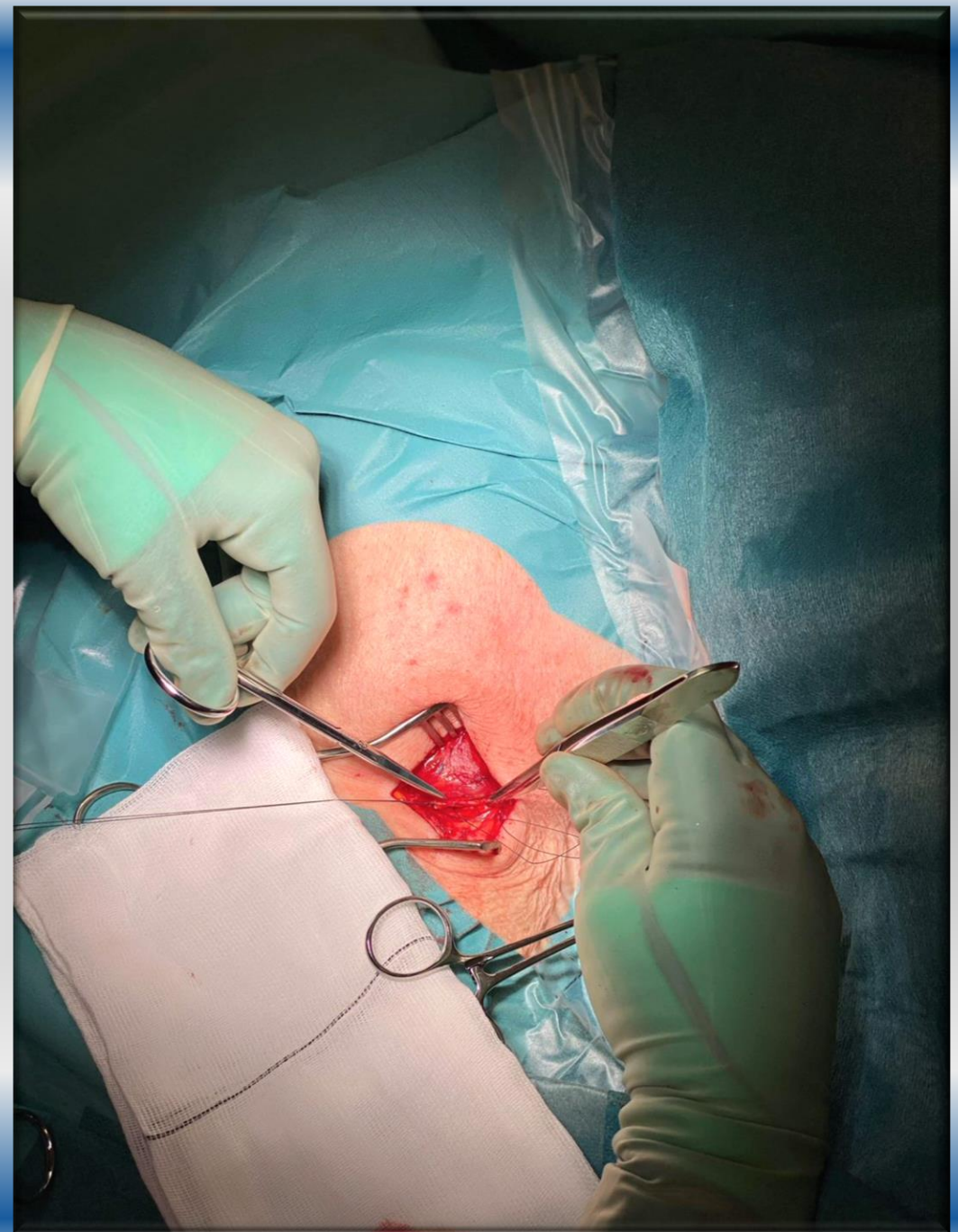


Revision

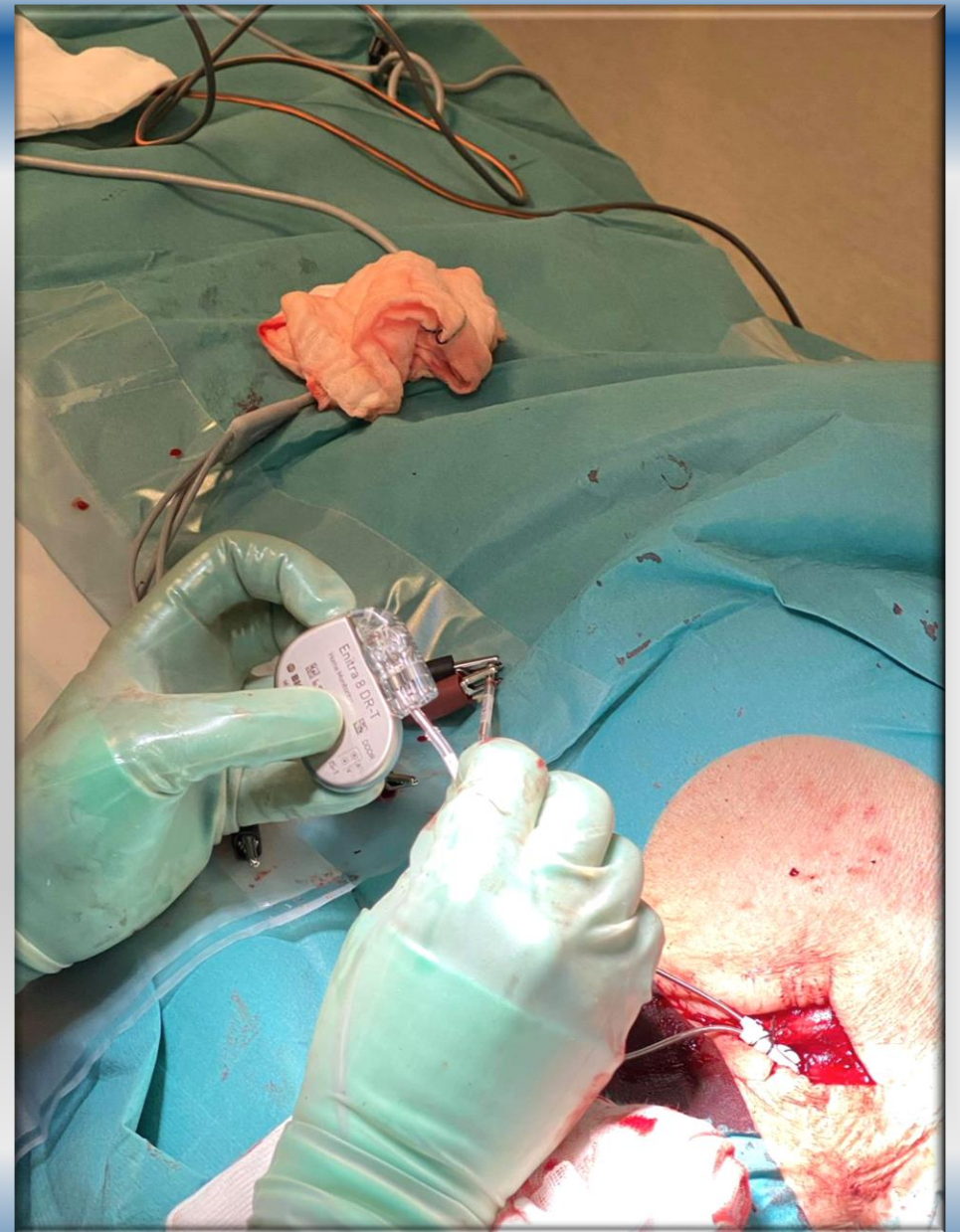


DF016		Kontroll och omprogrammering av <u>pacemaker</u> eller defibrillator (AICD)	KVÅ	>
ZXG40		Inläggande av transvenös <u>pacemaker</u>	KVÅ	>
ZXG50		Inläggande av epikardiell <u>pacemaker</u>	KVÅ	>
Z45.0		Justering och skötsel av <u>pacemaker</u> , defibrillator och annan kardiell anordning	ICD	>
FPE20		Inläggande av transvenös <u>pacemaker</u> med förmaks- och ventrikelelektrod	KVÅ	>
FPE30		Byte av pulsgenerator vid permanent transvenös <u>pacemaker</u>	KVÅ	>
FPE00		Inläggande av transvenös <u>pacemaker</u> med ventrikelelektrod	KVÅ	>

Implantation



Implantation



Hjärtsjukvården

Skånes Universitetssjukhus

Malmö

